

Commissioning of

**UNITED STATES SHIP
SIMON LAKE
(AS-33)**



**PUGET SOUND NAVAL SHIPYARD
Bremerton, Washington**

7 November 1964



NAVAL COMMISSIONING

The Commissioning Ceremony marks the initiation of service of a ship in the operating forces of the United States Navy. At the moment of breaking her commissioning pennant, U. S. S. SIMON LAKE (AS-33) becomes the responsibility of her commanding officer, Captain James B. Osborn, USN, who, together with the ship's company, then has the duty of making and keeping her constantly ready for any service demanded by our country in peace or war.

UNITED STATES SHIP
SIMON LAKE
(AS-33)

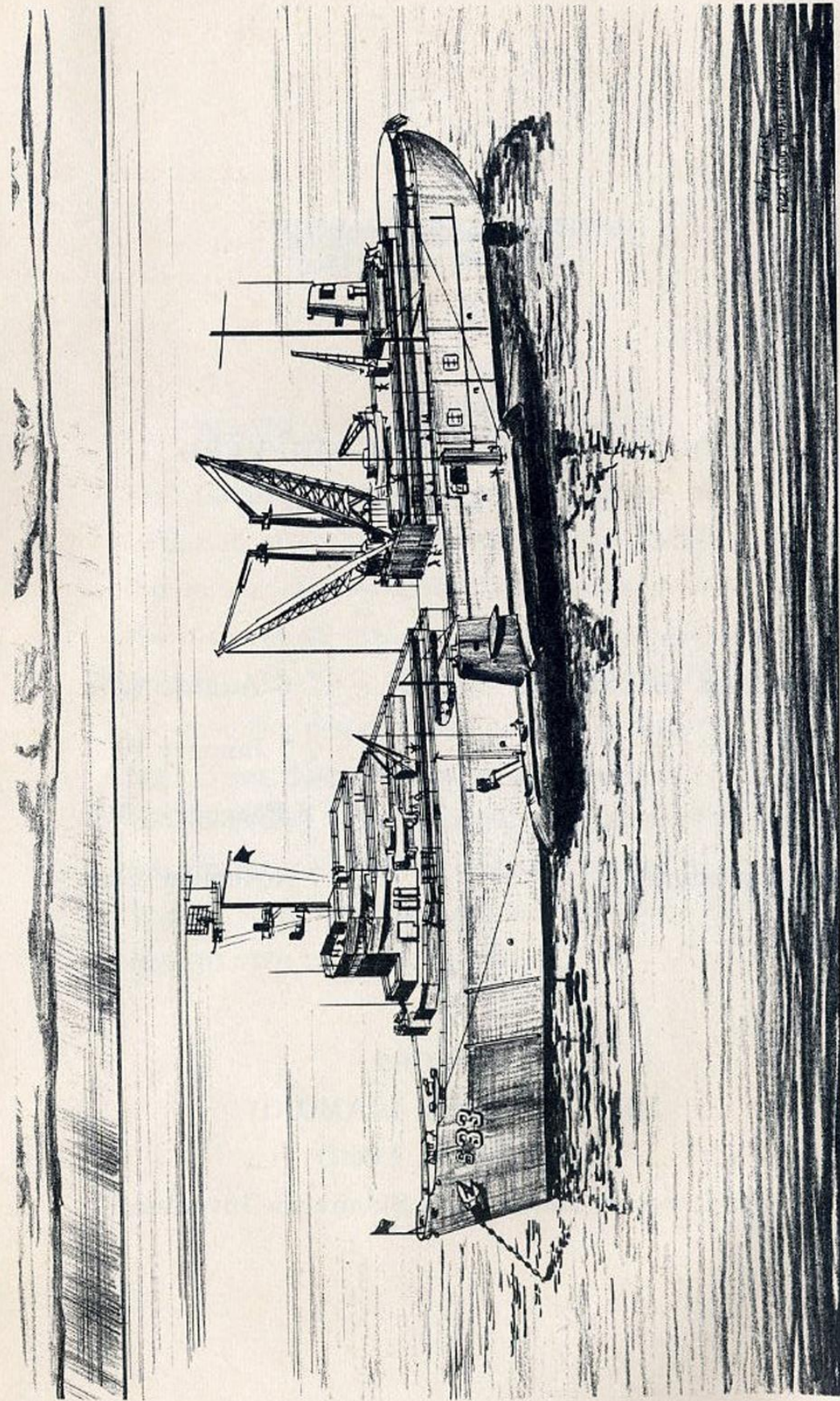
Built by
PUGET SOUND NAVAL SHIPYARD
Bremerton, Washington

★

Assigned to PSNS 6 August 1962
Keel laid 7 January 1963
Launched 8 February 1964
Commissioned 7 November 1964

★

SPONSORS
MRS. HERBERT DIAMOND
MRS. CECIL FORD
Daughters of Simon Lake, Submarine Inventor



U.S.S. SIMON LAKE (AS-33)

SHIP'S DATA
U.S.S. SIMON LAKE (AS-33)
Polaris Submarine Tender

The SIMON LAKE is the first ship named after this famous submarine inventor. She is the first ship of a new class of submarine tenders. Submarine tenders are usually named for star constellations and men known for their work with submarines.

HULL

Length Overall ----- 642 feet
Beam ----- 85 feet
Displacement ----- 21,265 tons
Draft ----- 23 feet, 7 inches

MACHINERY

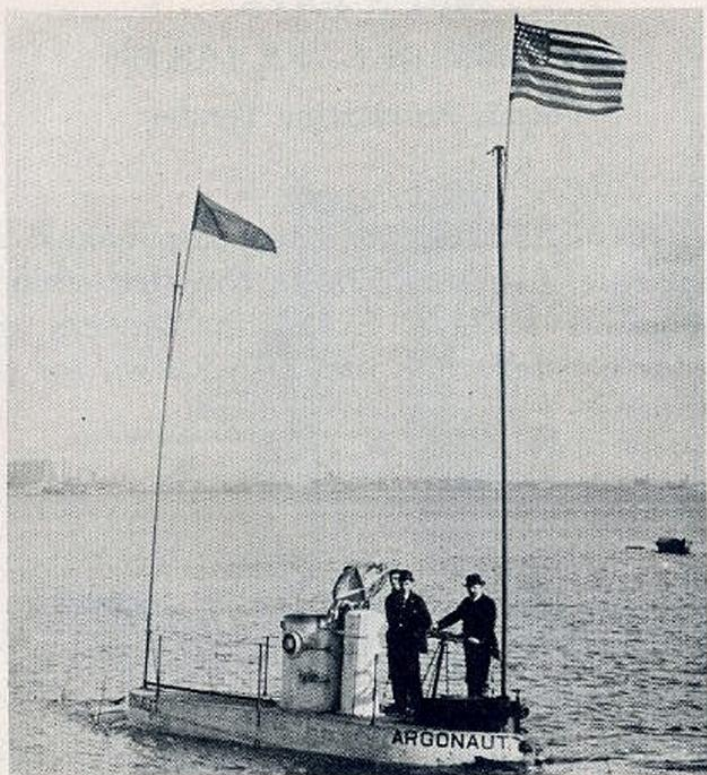
Propulsion Shafts ----- One
Type of Propulsion ----- Steam Turbine
Speed ----- 20 knots

ARMAMENT

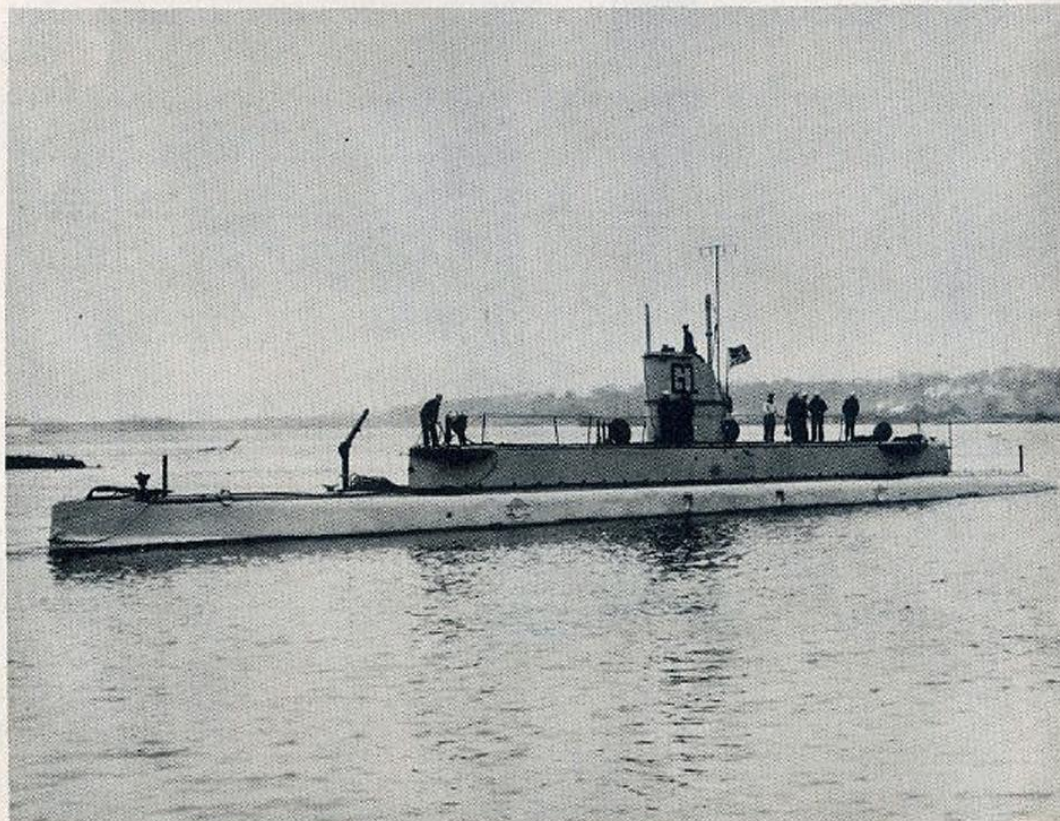
3"/50 caliber, rapid fire, twin mounts ----- Two

COMPLEMENT

55 Officers
1,020 Men



ARGONAUT
First Submarine built by Simon Lake in 1894



USS G-1
Simon Lake's first submarine for the U.S. Navy, 1912



**Simon Lake, Submarine Inventor
(1866 - 1945)**

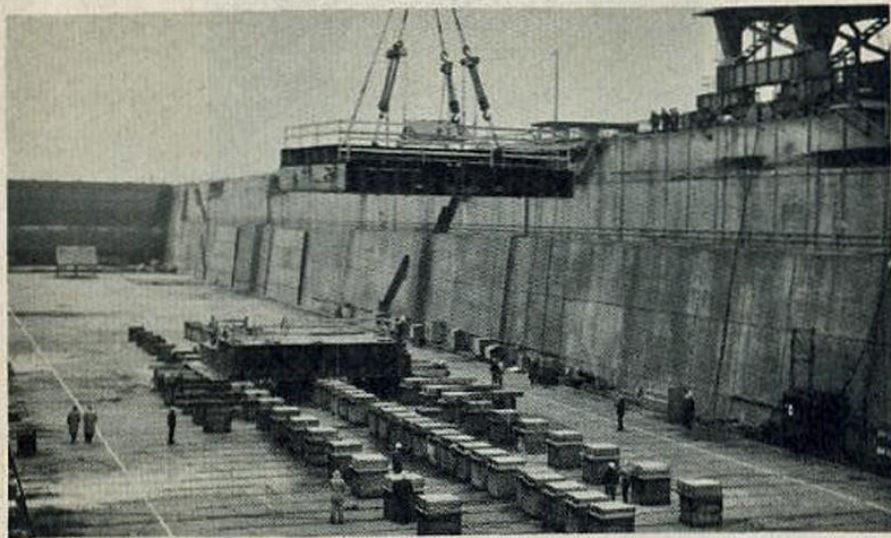
Simon Lake, born 4 September 1866, son of John Christopher Lake, an inventor and foundry owner, attended public schools in Philadelphia and Toms River, New Jersey and was graduated from the Clinton Liberal Institute at Fort Plain, New York. After a course in mechanical drawing he became a partner in his father's business.

Lake's main ambition since his childhood had been to build submarines for the United States Navy. His first submarine, ARGONAUT, was built in 1894. He was not a wealthy man and had a difficult time financing the building of this boat. Since the submarine was still considered experimental, the United States Government held trials to see if the Lake submarine or that of his rival inventor Holland was to be adopted. Neither was considered satisfactory at that time and Lake's much improved submarine PROTECTOR was built in 1901. PROTECTOR was the first successfully tested even-keeled submarine.

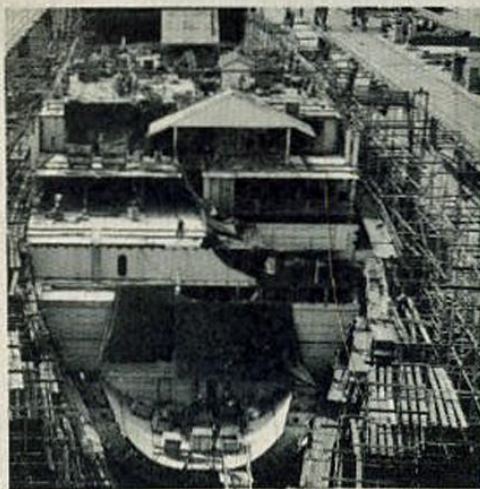
American naval authorities were slow in considering PROTECTOR and she was sold to Russia. Lake spent the next seven years in Europe where he advised on submarine construction as well as designing and building. On return to the United States he founded the Lake Torpedo Boat Company which built submarines for both the Austrian and American Governments. His first submarine for the United States Navy was USS G-1 constructed at the Newport News Shipbuilding and Dry Dock Company under a sub-contract from the Lake Torpedo Boat Company. Commissioned on 28 October 1912, the G-1 set a record by submerging to a depth of 256 feet. Soon the United States Government adopted the Lake type of submarine to be built in its Navy yards under royalty to the Lake company. There was universal recognition of the efficiency of his underseas craft and his influence on designs of United States Navy submarines has endured over the years to reach the era of the atomic and hydrodynamic design.

Simon Lake's interest was not in the military uses of underwater craft but rather, throughout his life he attempted to convince the world of the commercial and peaceful uses of the submarine. Although his boyhood dream never came true he went on to make many significant salvage and marine inventions and served in an advisory capacity during World War II. As the inventor of the first even-keeled submarine, Simon Lake was one of the greatest factors in the development of the submarine and before his death, 23 June 1945, he had seen many of his early visions become reality.

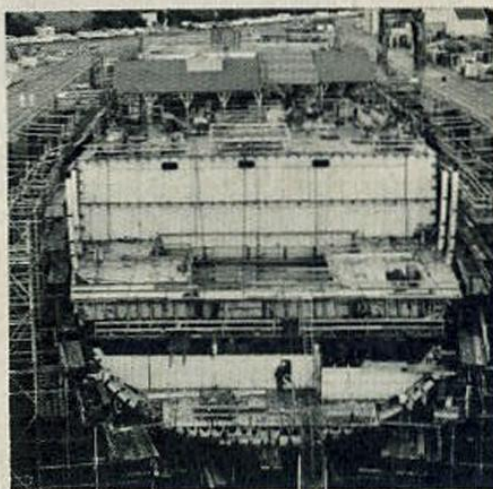
FROM KEEL LAYING



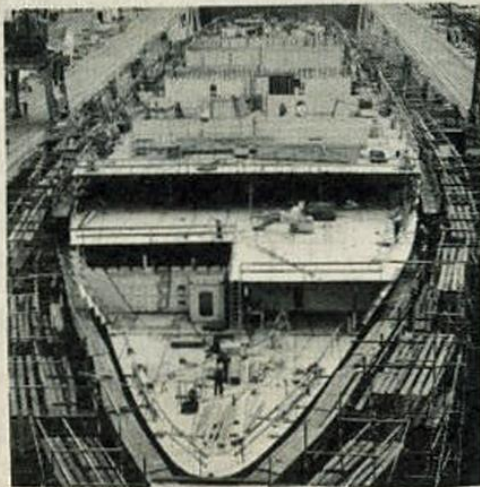
KEEL LAYING
7 January 1963



15 April 1963



1 July 1963



4 October 1963



28 January 1964

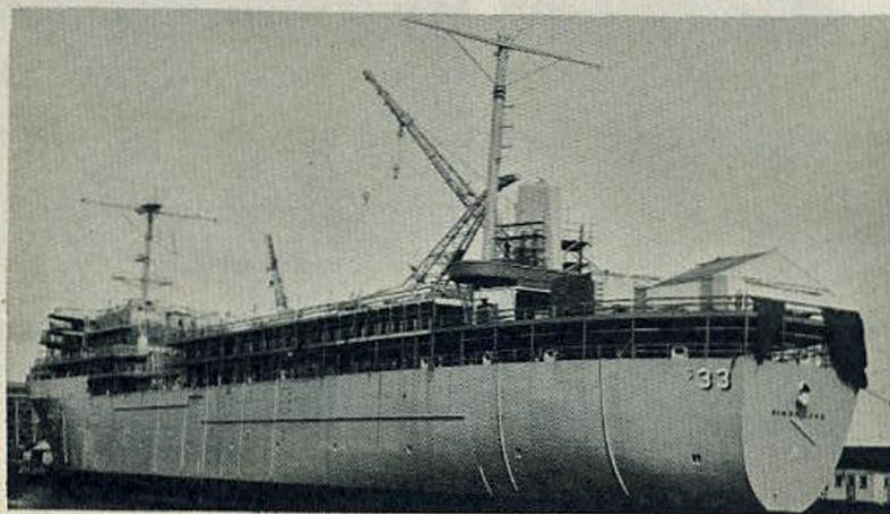
TO COMMISSIONING



Christened by Sponsors
8 February 1964



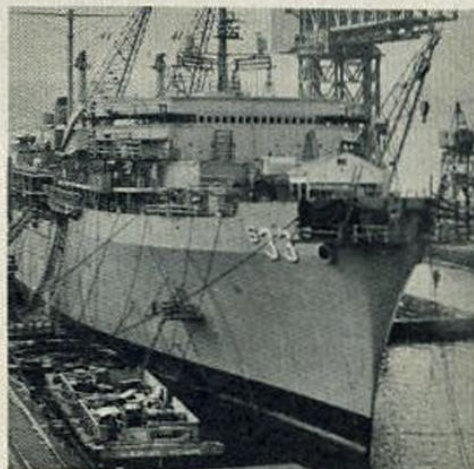
Waterborne
8 February 1964



22 April 1964



30 July 1964



12 October 1964

MISSION
of the
U.S.S. SIMON LAKE (AS-33)
POLARIS Submarine Tender

The Mission of SIMON LAKE is to provide vital mobile base facilities and support for Fleet Ballistic Missile submarines, especially for those POLARIS submarines deployed to advanced operating bases. Without base mobility, the POLARIS system would be completely dependent on fixed bases. With base mobility the capability exists to move the geographic location of operations of the POLARIS force, should the need arise, even to change the location to a completely different area of the globe, from the Atlantic to the Pacific.

SIMON LAKE has been designed to service and repair virtually every part and piece of equipment in a nuclear POLARIS submarine. Modern electronic and industrial equipment provides the capability for meeting any need POLARIS submarines may have.

SIMON LAKE can supply all needs of a submarine for weapons, food, fuel, reactor repair, consumable supplies and replacement parts, as well as for electrical power, water and other services alongside. As the Navy's newest and most modern POLARIS tender, this "floating shipyard" is a major achievement in maintaining

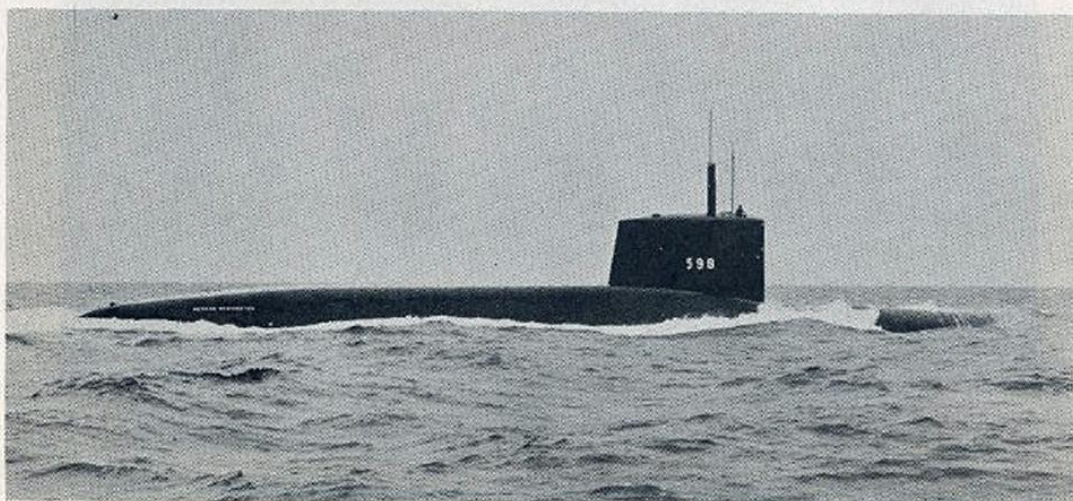
POLARIS ON STATION



Polaris A-2 Missile
1500 Nautical Mile range



Polaris A-3 Missile
2500 Nautical Mile range

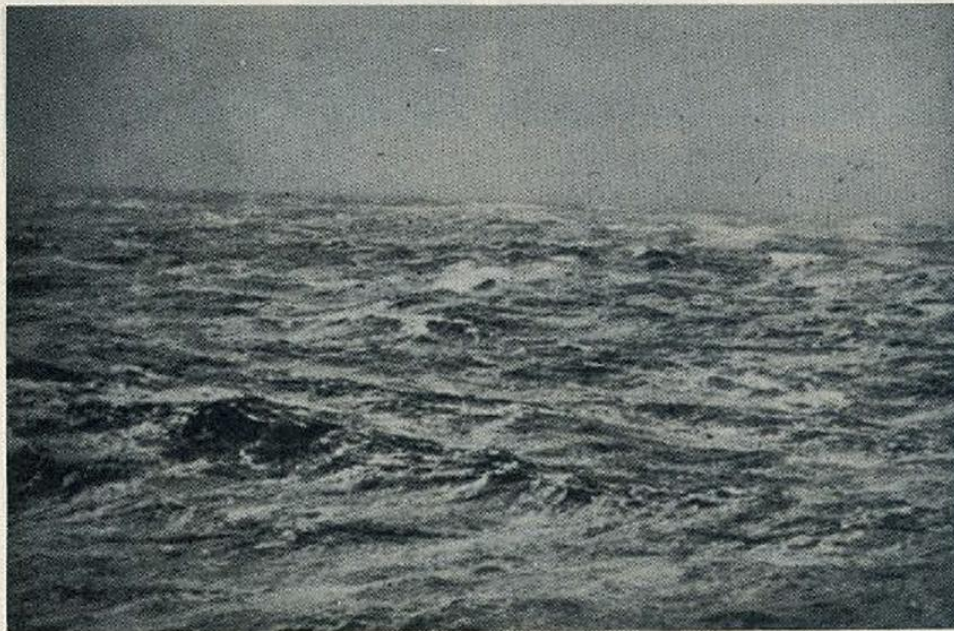


U.S.S. George Washington (SSBN-598)
First Fleet Ballistic Missile Submarine

HISTORY OF THE FLEET BALLISTIC MISSILE WEAPON SYSTEM

In 1955 the Navy stated its long range objective to develop a solid-propellant ballistic missile for use in submarines. This was within an over-all plan for the development of the liquid-propelled JUPITER missile after the National Security Council recommended, and the President approved, "that a 1500 mile ballistic missile system be developed." In 1956 the Secretary of Defense authorized the Navy to proceed with the development of the POLARIS missile, a smaller solid-propellant missile, and to terminate participation in the JUPITER Program. By the end of 1956 the Secretary of the Navy had established the Navy Ballistic Missile Committee to direct the high-priority FBM system and gave the Special Projects Office, headed by RADM William F. Raborn, USN, the responsibility for the development of the entire missile system. The first Fleet Ballistic Missile test flight occurred on 11 January 1958.

Also, in January 1958, construction was begun on the first three FBM submarines. The first one, USS GEORGE WASHINGTON (SSBN-598) had been laid down as USS SCORPION, but was cut in two and had a 130 foot weapon system section inserted. She was launched at the Electric Boat Company, Groton, Connecticut on 9 June 1959, commissioned on 30 December of that year, and on 20 June 1960 successfully launched the first two POLARIS missiles ever launched from a submerged submarine. On 15 November 1960 she departed from Charleston, South Carolina for her first FBM operational patrol during which she set a new record of 66 days, 10 hours submerged continuously. The Prospective Commanding Officer of USS SIMON LAKE (AS-33), Captain James B. Osborn, was the first Commanding Officer of GEORGE WASHINGTON.



Polaris On Station

The USS PROTEUS (AS-19), a World War II submarine tender converted for POLARIS submarine use, was commissioned on 8 July 1960 in Charleston, S.C. as the first POLARIS Tender. After performing the first upkeep in New London, Connecticut on the newly returned GEORGE

WASHINGTON, PROTEUS sailed in February 1961, for Holy Loch, Scotland and established the first POLARIS advanced base.

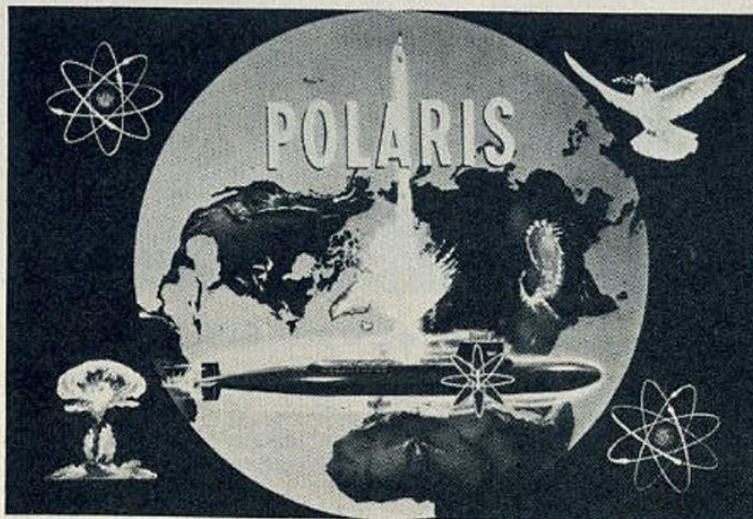
On 6 May 1962 the USS ETHAN ALLEN, operating in the Pacific successfully fired a POLARIS missile with a nuclear warhead. Successful nuclear detonation was achieved.

The first of the largest class submarine ever built, the USS LAFAYETTE (SSBN-616) was christened on 8 May 1962 at Groton, Connecticut by Mrs. John F. Kennedy, wife of the late President.

By August 1964 funds for the construction of five new FBM tenders had been authorized. Three FBM tenders are now operational: USS PROTEUS (AS-19), USS HUNLEY (AS-31) and USS HOLLAND (AS-32), the latter two having been built from the keel up as FBM tenders. SIMON LAKE and USS CANOPUS (AS-34), which is being built at the Ingalls Shipbuilding Corp., Pascagoula, Miss., will be the fourth and fifth tenders respectively. HUNLEY relieved PROTEUS in Holy Loch in March 1963, and HOLLAND then relieved PROTEUS in Rota, Spain in April 1964, this location being the second advanced FBM base. PROTEUS will establish the third advanced POLARIS base at Guam late this year.

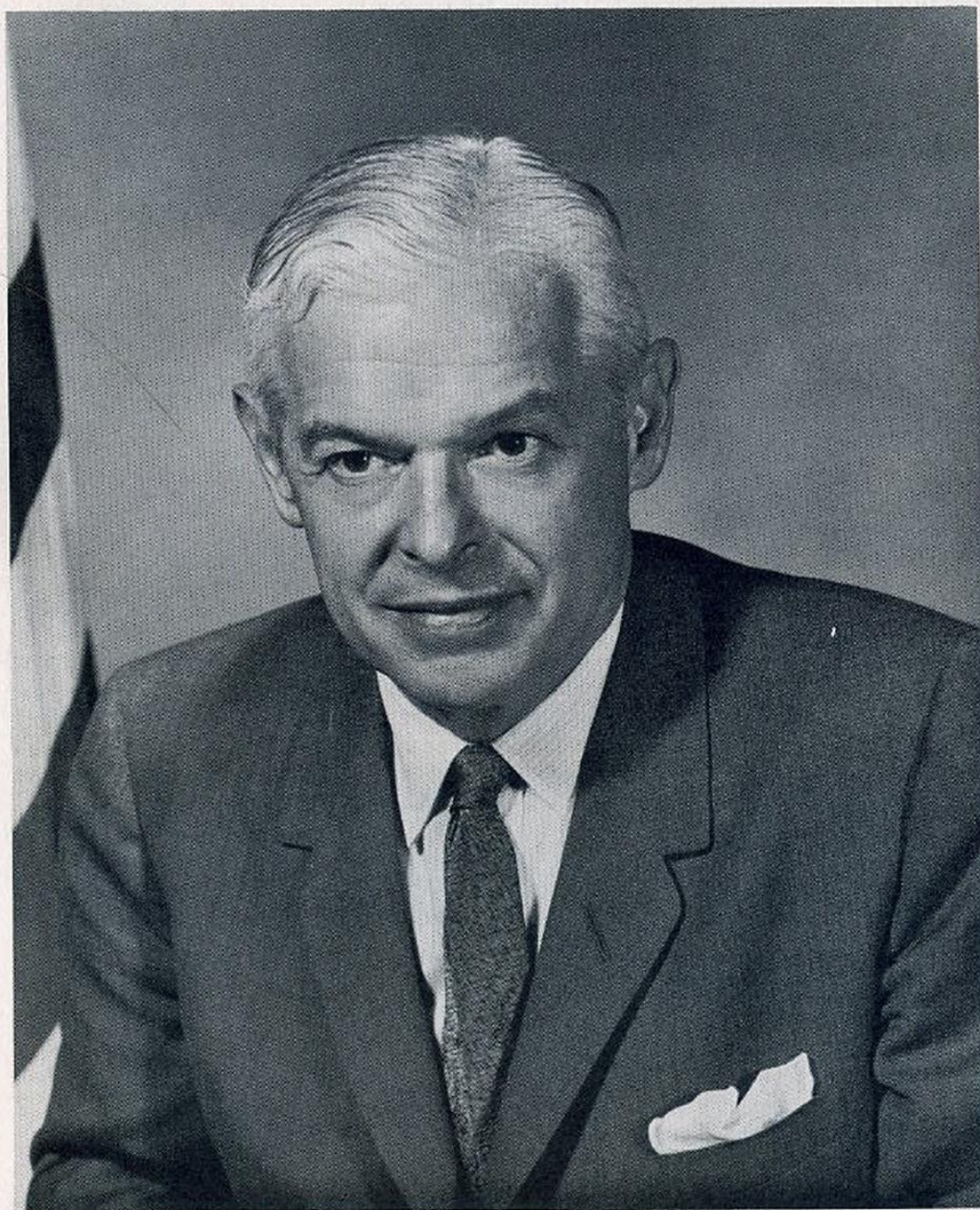
From the inception of the POLARIS concept to the newest 2500 mile tender, PROTEUS, to SIMON LAKE, the newest and most advanced submarine tender ever built, the entire POLARIS program has been key-noted by the dedicated efforts and coordination of thousands of military personnel, a significant portion of American industry and the development of new concepts of logistics and industrial management never before adapted to military administration.

Today, with her vast complex of modern industrial equipment, her advanced Data Processing Computer, her capacity to provide every imaginable service to her submarines, and most important, with the training and experience of her 1075 officers and men, SIMON LAKE joins the Fleet to take her place in the FLEET BALLISTIC MISSILE WEAPON SYSTEM which, with 41 nuclear submarines and 6 tenders will be entirely operational by 1967.



“THE PRIMARY PURPOSE OF OUR
ARMS IS PEACE, NOT WAR”

JOHN F. KENNEDY, 28 March 1961



To the officers and men of USS Simon Lake (AS33)
with my sincere confidence in your ability to accomplish
your tasks and live up to the many responsibilities
that will be yours. May you always be blessed
with fair winds and following seas Paul H. Nitze
Sec. of the Navy

THE HONORABLE PAUL NITZE
Secretary of the Navy



THE SECRETARY OF THE NAVY
WASHINGTON

29 October 1964

My dear Captain Osborn:

It is with great pleasure that I extend my best wishes to you and the officers and men of USS SIMON LAKE (AS-33) on the memorable occasion of her commissioning.

Yours is the first ship to be named for Simon Lake, the man whose inventive genius contributed significantly to the development of the submarine. It is appropriate that USS SIMON LAKE (AS-33) is designed to support the most powerful members of our nation's under-sea fleet - the POLARIS submarines.

I know that you and your crew will derive satisfaction from the knowledge that yours is a mission vital to the defense of peace and freedom. I am confident that you, your officers and crew will meet every challenge with professional excellence and devotion to duty.

Sincerely yours,

Captain James B. Osborn, USN
Prospective Commanding Officer
USS SIMON LAKE (AS-33)
Puget Sound Naval Shipyard
Bremerton, Washington



To the officer and men of U.S.S. SIMON LAKE with great appreciation for their dedicated and able service and for the vital role they are fulfilling for the security of our Country.

*David L. McDonald
Admiral, U.S. Navy
Chief of Naval Operations*

ADMIRAL DAVID L. McDONALD
Chief of Naval Operations



CHIEF OF NAVAL OPERATIONS

29 October 1964

Dear Captain Osborn,

On the occasion of the commissioning of USS SIMON LAKE (AS-33) I congratulate you on your new command and extend my very best wishes to you and to your officers and men.

You have been selected to command one of the finest ships in the finest Navy on earth. USS SIMON LAKE (AS-33) is designed to support Fleet Ballistic Missile submarines and as such she will play a vital part in contributing to our nation's freedom and to a peaceful world. I am confident that the officers and men of SIMON LAKE under your leadership will develop rapidly into the skilled team that will permit this great ship to take her rightful place in the Navy. I truly envy you your new assignment.

Welcome to the Fleet. May you be favored with calm seas and God's blessings in carrying out your duties.

Sincerely,



DAVID L. McDONALD

Captain James B. Osborn, USN
Prospective Commanding Officer
USS SIMON LAKE (AS-33)
Puget Sound Naval Shipyard
Bremerton, Washington



REAR ADMIRAL EUGENE B. FLUCKEY
Commander Submarine Force, U.S. Pacific Fleet
PRINCIPAL SPEAKER



Commander Submarine Force
United States Pacific Fleet

7 November 1964

To the officers and men of the **USS SIMON LAKE**
(AS-33) I recommend the three mottoes I gave my
Commanding Officers when I assumed command of the
Submarine Force, U. S. Pacific Fleet:

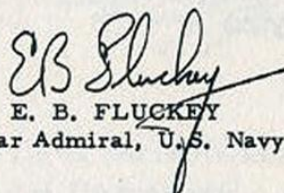
STRIKE AND STRIKE HARD....

DRIVE YOURSELF AND LEAD OTHERS....

NEVER OFFEND ANYONE....

You have met the challenges of building this outstanding ship, now you must meet the challenge of infusing her with life and character. You must build her reputation, step by step, accomplishing the routine in an outstanding manner. Accept the personal challenge that is offered by the POLARIS program, internationally recognized as the world's foremost deterrent system.

The waters of many oceans will flow under the keel of this ship. Sail and serve with pride, with honor and with dedication.


E. B. FLUCKEY
Rear Admiral, U.S. Navy

REAR ADMIRAL EUGENE B. FLUCKEY, USN

Holder of the nation's highest military decoration, the Medal of Honor, Rear Admiral E. B. Fluckey, USN, assumed command of the Submarine Force Pacific, June 1, 1964, after completing special assignments for the Secretary of the Navy in Washington, D.C.

Immediately prior to his assignment as special assistant to the Secretary of the Navy, Admiral Fluckey served as President of the Board of Inspection and Survey in Washington, D.C.

Commanding Officer of the Submarine BARB of World War II fame, Admiral Fluckey earned the Medal of Honor in action on the ship's eleventh war patrol along the East Coast of China in the winter of 1944 and 1945.

His extensive military career spans service in both World War II and the Korean conflict, includes submarine duty on staffs and tenders as well as submarines, duty with the American Embassy in Portugal, service with the National Security Council and as Commander South Atlantic Amity Force. At the direction of the President of the United States, this Force made an extensive people-to-people tour of African nations while under Admiral Fluckey's command. Prior to his African tour he commanded Amphibious Group FOUR, the Brush Fire Brigade that stands watch in the Caribbean.

In addition to the Medal of Honor, Admiral Fluckey holds the following decorations for service in World War II: Four Navy Crosses, Presidential Unit Citation, Navy Unit Commendation American Defense Service Medal with Fleet Clasp; the Asiatic-Pacific and American Defense Campaign Medals; the World War II Victory Medal, the Philippine Liberation Medal and National Defense Medal.

His outstanding and brilliant naval career notwithstanding, Admiral Fluckey considers his attainment of the rank of Eagle Scout as a proud and propitious achievement.

Admiral Fluckey is married to the former Miss Marjorie Palmer Gould of Long Beach, Calif. They have a married daughter, Barbara Ann, and two grandchildren.

Admiral and Mrs. Fluckey are living in Makalapa officers quarters near Pearl Harbor.



ADMIRAL H. P. SMITH
Commander in Chief, U.S. Atlantic Fleet



ADMIRAL T. H. MOORER
Commander in Chief, U.S. Pacific Fleet



VICE ADMIRAL V. L. LOWRANCE
Commander Submarine Force, U.S. Atlantic Fleet



REAR ADMIRAL L. R. DASPIT
Commandant, Sixth Naval District



REAR ADMIRAL W. E. FERRALL
Commandant, Thirteenth Naval District



REAR ADMIRAL W. A. BROCKETT
Chief, Bureau of Ships



REAR ADMIRAL F. B. SCHULTZ
Commander, Puget Sound Naval Shipyard



SPONSORS
MRS. CECIL FORD AND MRS. HERBERT DIAMOND
Daughters of Simon Lake



REAR ADMIRAL I. J. GALANTIN
Director, Special Weapons



REAR ADMIRAL J. A. TYREE, JR.
Deputy Commander Submarine Force
U.S. Atlantic Fleet



CAPTAIN JAMES B. OSBORN
Commanding Officer, U.S.S. SIMON LAKE (AS-33)

Captain James Butler Osborn was born 5 May 1918, at Stockton, Missouri. He attended the University of Missouri for two years prior to entering the Naval Academy in 1938. After graduation from the Naval Academy in 1941, he served in the battleship USS TENNESSEE in the Pacific during the early part of World War II. In 1944, he was assigned to submarines and made six war patrols in the USS PERCH in the Southwest Pacific.

When World War II ended, Captain Osborn, then a Lieutenant Commander, entered postgraduate training. In 1948 he received his Masters Degree in Mechanical Engineering from Rensselaer Polytechnic Institute where he was awarded full membership in Sigma Xi for scholastic achievement.

Captain Osborn became associated with the Navy's submarine ballistic missile program in the early phase when the Navy was experimenting with launching captured World War II German V-2 bombs from submarines. He was Commanding Officer of our first guided missile submarine, the USS TUNNY, which carried the REGULUS missile.

In 1958 Captain Osborn was selected to command our Navy's first ballistic missile launching submarine, the USS GEORGE WASHINGTON. Two years later, in July 1960, this submarine launched the first POLARIS missile from below the ocean surface of Cape Canaveral. The GEORGE WASHINGTON made the first POLARIS patrol from November 1960 to January 1961. For outstanding achievements as Commanding Officer of GEORGE WASHINGTON, he was awarded the Legion of Merit and the Navy League Stephen Decatur Award. The ship received the Navy Unit Commendation.

Captain Osborn was assigned as the Representative of the Commander in Chief, Atlantic, to the Joint Strategic Target Planning Staff at Offutt Air Force Base prior to reporting to Puget Sound Naval Shipyard as Prospective Commanding Officer of the SIMON LAKE.

He is married to the former June Hanna of Crystal City, Missouri. They have two daughters, JoAnn, attending Syracuse University and Janel, attending the University of Missouri.



COMMANDER LAWRENCE E. STAHL
Executive Officer, U.S.S. SIMON LAKE (AS-33)

Commander Lawrence E. Stahl was born on 22 April 1923 in Big Rapids, Michigan. Raised in Ypsilanti, Michigan he graduated from high school there and attended Notre Dame until he entered the U. S. Naval Academy in 1942. After graduation in 1945, Commander Stahl attended Basic Officers' Submarine School in New London, Connecticut graduating in December 1945.

From January 1946 until 1952 Commander Stahl served on board the submarines ENTEMEDOR, VOLADOR, CATFISH and MENHADEN in many billets, including communications electronics, gunnery, operations and engineering. As the Engineer Officer on the USS CATFISH (SS-339) he participated in a number of reconnaissance patrols in connection with the Korean hostilities.

Commander Stahl attended the U.S. Naval Postgraduate School, Monterey, California from 1952 to 1954, when he graduated with the Bachelor of Science and Master of Science degrees in Operations Analysis.

Returning to the Fleet for a short tour on the Staff, Submarine Development Group II in New London, Commander Stahl served as Executive Officer on board both the USS TENCH (SS-417) and USS SAILFISH (SSR-572). Commander Stahl commanded the USS SEAPOACHER (SS-406) from June 1959 until July 1961, receiving the Navy Commendation Medal upon completion of that tour.

From August 1961 to May 1962, Commander Stahl continued further professional graduate training at the Armed Forces Staff College, Norfolk, Va., POLARIS Prospective Commanding Officers' Course at Dam Neck, Va., and the Nuclear Weapons Training Center, Norfolk, Va.

Prior to reporting to SIMON LAKE, he served for over two years as an Operational Planner representing the POLARIS Weapons System on the Joint Strategic Target Planning Staff, Offutt Air Force Base, Omaha, Nebraska.

Commander Stahl is married to the former Mary Wilson Kistler, of Morganton, North Carolina, who is residing with their children, Stephen, Mary and Elizabeth in Charleston, S.C.

DEPARTMENT HEADS



CDR RUSSELL A. JONES, SC
Supply



CDR PATRICK G. O'KEEFE
Repair



CDR MAURY E. WORTHAM, DC
Dental



LCDR JOHN H. MILLER
Weapons Repair



LT ALBERT C. CACIOPPO
Engineering

DEPARTMENT HEADS



LT JACK L. PATTERSON
Operations/Navigation



LT RICHARD Z. MILLSAPS
Deck



LT FRED L. BAKER, MC
Medical



LT JOHN B. SHINDLECKER
Administrative Assistant



CAPT BOBBY J. READY, USMC
Commanding Officer, Marine Detachment

U.S.S. SIMON COMMISSIONING

7 November

Band Selections

Thirteenth Naval District Band



Invocation

The Right Reverend Monsignor
Joseph E. Camerman



Welcoming Remarks and Introduction of Distinguished Guests

Rear Admiral Floyd B. Schultz, USN
Commander, Puget Sound Naval Shipyard



Remarks and Introduction of Principal Speaker

Rear Admiral William E. Ferrall, USN
Commandant, Thirteenth Naval District



Commissioning Address

Rear Admiral Eugene B. Fluckey, USN
Commander, Submarine Force
U.S. Pacific Fleet



Reading of Navy Department Orders to Commission

U. S. S. SIMON LAKE (AS-33)

Rear Admiral William E. Ferrall, USN

LAKE (AS-33) G CEREMONIES nber 1964

Ensign, Jack and Commission Pennant are hoisted
as the band plays the National Anthem.
The ship is now in commission.

★

Reading of Commanding Officer's orders
and assumption of command

Captain James B. Osborn, USN

★

First watch is set by the Executive Officer

Commander Lawrence E. Stahl, USN

★

Remarks

Captain James B. Osborn, USN

★

Benediction

Commander P. J. Bakker, CHC, USN
Chaplain, Puget Sound Naval Shipyard

★

Band Selections

Thirteenth Naval District Band

SHIP'S OFFICERS



LCDR ARMAND R. NICE, MSC
Radiological Health Control/PIO Officer



LCDR CHARLES R. DIEM, DC
Assistant Dental Officer



LCDR EARL E. GOODWIN, SC
Assistant Supply Officer

SHIP'S OFFICERS



LT RICHARD G. PREECE, DC
Assistant Dental Officer



LT JAMES A. SZWED, SC
Control Officer



LT WAYNE A. BRAASTAD
Training Officer



LT EUGENE L. HILL
Electrical Officer



LT JAMES W. FLOW
Assistant Repair Officer



LT VERNON W. BACON
Missile Repair Officer

SHIP'S OFFICERS



LT ERNEST F. SUSALLA
Repair Training Officer



LT JOSEPH P. SCHRANK, SC
Material Officer



LT HARRY D. BROWN
Hull Repair Officer



LT EVERETT L. JOHNSON
Special Weapons Officer



LT VIRGIL M. KLOTZNER
Data Processing Officer



LT DAVID F. KATUSHA
FC Repair Officer

SHIP'S OFFICERS



LT JAMES C. LAIDLAW, MC
Assistant Medical Officer



LT CARL G. OLSON
Radiological Control Officer



LT LOWELL S. TAYLOR
Electronics Repair Officer



LT ROBERT J. HAWKEY
Astor/Subroc Torpedo Officer



LT MICHAEL BARON
Navigation Repair Officer



LT TEMPLE L. ALLEN
Electrical Officer

SHIP'S OFFICERS



LT HOWARD L. OTIS
Communications Officer



LT MAURICE R. BAKER
Main Propulsion Officer



LTJG WAYNE W. SUCKOW
Nuclear Systems Repair Officer



LTJG CHARLES E. BAKER, SR., SC
Assistant Control (Systems) Officer

SHIP'S OFFICERS



LTJG MAHLON J. HOARD
Machinery Repair Officer



LTJG EDWARD BRIGGS
Auxiliaries/DC Officer



LTJG MELFORD D. ROLOW
Repair Services Officer



LTJG GUY J. GREGOIRE
Assistant Machinery Repair Officer



LTJG CHESTER G. SKAPCZYNSKI, SC
Ships Store Officer



LTJG RICHARD B. LEFCORT
RPS Custodian Officer

SHIP'S OFFICERS



ENS BILLY R. STEELE
EOD/SW Officer



ENS EDWARD A. JONES
Repair Technical Officer



ENS RONALD K. PECK, SC
Officers Mess Officer



ENS LANTY E. THOMPSON
Personnel Officer



ENS GILBERT P. SHADDOCK
Assistant FC Officer



ENS THOMAS J. DEANE
Subsistence Officer

SHIP'S OFFICERS



ENS JOHN F. OLIO, SC
Assistant Material Officer



ENS ROBERT S. TREBATOSKI, SC
Disbursing Officer



CWO-4 DONALD E. HUFFMAN
Ships Boatswain/Asst. 1st Lieutenant



CWO-2 BURTON M. PIERCE
Asst. Missile Repair Officer

SHIP'S CREW

DECK DEPARTMENT

1st Division

Sangillo, E.J., BMC

| | | |
|------------------------|----------------------|------------------------|
| Allman, C.S., SN | Henard, P.H.Jr. SN | Schelp, T.R., SA |
| Bailey, D.L., SA | Hyatt, L.W., SN | Shepard, J.L., SA |
| Booker, S.G., SA | Johnson, R.L.Jr., SA | Smith, J.P., SN |
| Burton, T.E., SA | Langer, R.F., SA | Stavely, M.(N), BM2 |
| Cammile, E.J., SN | Manszewski, W.C., FA | Thresher, D.L., FA |
| Cook, J.W., FA | McCarty, E.D., SN | VanAntwerp, T.C.Jr.SA |
| Countryman, L.D., BM1 | Osborne, S.E., SA | Webb, A.L., SN |
| Decosta, J.H.Jr., GMG3 | Parm, C.T., GMG1 | Wengel, R.J., BM3 |
| Donahue, H.G., BM3 | Pollins, B.(N), SA | Whittleton, P.(N), BM3 |
| Dunn, S.G., BM1 | Rambo, C.W., YN3 | Wilson, D.F., FA |
| Fabacher, U.G.Jr., FA | Richards, J.F., FN | Wright, D.F., SA |
| Fike, R.G., FA | Ring, S.E., SA | |
| Hack, J.M., SA | Ross, S.N., SA | |

2nd Division

Lankford, J.D., BMC

| | | |
|----------------------|------------------------|----------------------|
| Byrd, C.J. Jr., SA | Gruner, L.E., FA | Morazzini, A.W., BM3 |
| Campbell, R.G., SA | Hall, C.H., ETR3 | Morris, G.L., SA |
| Carl, R.J., SA | Hampton, W.R., SA | Norman, L.G., BM3 |
| Copeland, M.R., SA | Henry, R.S., SA | O'Haire, A.J., SA |
| DeDiego, R.J., SA | Hickman, J.S., SA | Pearson, S.D., FA |
| Desario, L(N), SA | Hildebrandt, M.(N), SA | Roberts, N.P., SA |
| Dunn, J.P., SA | Humphrey, T.G., BM2 | Scaife, W.C., SA |
| Ellis, S.E., SAN | Jantz, P.M., SA | Swan, S.D., SA |
| Ford, J.W., FA | Jeffcoat, E.J., BM1 | Taylor, T.L., SN |
| Grainger, T.(N), BM3 | Marlowe, B.N., SR | |

3rd Division

Williams, V.(N), BMC

| | |
|-----------------------|---------------------------|
| Alonzo, T.R., SN | Jones, A.B., BM3 |
| Avelino, W.V., SN | Jones, R.M., SA |
| Bain, J.(N) Jr., SN | Jordan, T.B., SA |
| Brown, J.R., SN | Kidder, G.L., BM3 |
| Burkett, J.R., FA | Miller, R.W., FA |
| Chamberlain, D.B., SA | Musto, M.J., SA |
| Davis, J.B., BM1 | Poterfield, H.(N) Jr., SA |
| Edwards, L.D., BM3 | Reynolds, S.R., SN |
| Ferguson, R.D., SN | Russell, R.C., SN |
| Gill, J.R., ETRSN | Sizemore, D.P., EN1 |
| Gulley, A.J., SN | Williams, R.L., SN |
| Harper, H.T., BM2 | Wohlers, E.R., BM2 |

SHIP'S CREW

ENGINEERING DEPARTMENT

"A" Division

Bumm, M.J., ENCM

Hodge, C.A., ENCA

Porter, J.W., MMC

Armstrong, R.T., Jr., ENFA

Bailey, R.W., FA

Barker, R.E., FA

Bastarache, A.J., FA

Bernard, .K., MM1

Beyer, L.G., FA

Boling, M.C., Jr., FA

Bramlette, E.S., EN2

Caldwell, C.E., FA

Carlson, R.G., FA

Christen, J.E., EN1

Church, A.D. III, FA

Cockerham, D.B., FA

Cooper, H.A. Jr., FA

Cox, F (N), EN1

Curfman, D.R., EN3

Davis, M (N), EN1

Dejardin, W.R., FA

Demay, R.A., FA

Densten, D.H., FA

Dickoff, D.A., FA

Duhr, R.A., EN2

Edmondson, D.B., FA

Edwards, D.B., FA

Evans, D.L., FA

Fawley, H.E., MM1

Freeman, B.W., EN2

Haley, T.B., FA

Higgins, J.G., FA

Hughes, C.T., ENFN

Huntsman, J.W., MM2

Johnston, B.W., EN2

Keeler, L.R., EN1

Laquaglia, D.A., FA

Largay, M.P., FA

Larsen, W.R., FA

Lemke, D.H., EN2

Lloyd J.L., ENFA

Loveland, G.L., MM2

Menikhein, W.L., EN3

Neff, F.C., EN2

Olson, R.A., ENFA

Oxendine, K.G., FA

Page, J.O., MM1

Parker, C.W., FA

Patterson, J.D., MM1

Peete, L.E., MM1

Pelkey, M.E., EN1

Penny, S.J., EN1

Plaisted, L.R., ENFA

Richards, W.D., FA

Roberts, T.B., MM2

Rosiak, T.W., FA

Schley, S.W., FA

Sellers, W.C. Jr., FN

Smith, W.G., EN3

Stanley, E.W., FA

Stevens, H.J., EN3

Sturgill, D.A., ENFA

Touchstone, A.T., FA

Vickroy, K.A., EN3

Wagner, J.A., ENFA

Wallace, E.S., EN1

Wallace, W.C., ENFN

Walters, G.S., EN1

Weaver, K.R., FA

Wetherbee, N.V., MM1

Whitt, B.R., EN2

Wilims, W. (N), FA

SHIP'S CREW

ENGINEERING DEPARTMENT

"B" Division

Fowler, T.M. Sr., BTCA

| | |
|----------------------|------------------------|
| Betteley, R.J., FA | LeBlanc, O.J.W., FA |
| Carbone, R. (N), FA | Lewis, .PB., BT1 |
| Casey, G.F. Jr., BT2 | Lydon, R.C., BT3 |
| Clayton, R.D., BT2 | Martello, L.C., FA |
| Diaz, A. (N), FA | Mauboussin, A.J., FA |
| Ferebee, C.N., BT2 | Maye, W.H. Jr., BT3 |
| Graham, D.B., BT3 | Miller, G.M. Jr., BT1 |
| Holbert, N.C., FA | Montgomery, J. (N), FA |
| James, D.L., FA | Mulcahey, J.H., FA |
| Johnson, C.M., FA | Sanders, S. (N), FN |
| Jones, J.H., BT2 | Wilson, C.L., BT1 |
| Lawson, K.E., FA | |

"E" Division

Conrad, H.L., EMC

| | |
|-------------------------|-----------------------|
| Anderson, E.E., IC1 | Jonas, V. (N), FA |
| Austin, .E. Jr., IC2 | Keating, W.L., EM3 |
| Beard, R.L. Jr., EM2 | Kilgore, G.W., EM3 |
| Bowes, R.H., FA | Kraft, D.L., EM1 |
| Bridges, W.H. Jr., ICFN | Leahon, W.F., EMFN |
| Brisson, G.P., FA | Maine, I.V., FA |
| Brown, T.R., ICFN | Marcum, D.R., FN |
| Campbell, D.L., IC1 | Marcum, D.L., EM1 |
| Chop, C.(N) Jr., EM2 | Massey, R.J., FA |
| Clifford, E.H., EM3 | Mathis, N.L., EM2 |
| Covington, C.A., FA | McCullough, J.A., FA |
| Crow, A.W., EM3 | Meredith, R.S., EM1 |
| Evans, W.J. Jr., FA | Mick, W.E., EM3 |
| Fearn, R.L., EM2 | Osborn, L.B. Jr., EM2 |
| Frey, R.L., FA | Parham, J.R., EMFN |
| Fried, E. (N), ICFN | Ricbich, J.P., FA |
| Goertz, I.E., EMFN | Richardson, R.L., EM3 |
| Graffing, B.H., EM2 | Sanders, L.B., EMFN |
| Grasty, J.T. Jr., FN | Spade, R.E., EMFN |
| Grow, W. (N), FA | Swinson, L.L., EMFA |
| Harris, A. (N), FA | Tritz, D.L., EM1 |
| Hass, G.D., ICFA | Wagner, R.F., ENFA |
| Johnson, K.E., EMFN | Wilkinson, G.W., EM2 |
| Joiner, V. (N), EMFN | Yancey, S.L., FN |

SHIP'S CREW

ENGINEERING DEPARTMENT

"DC" Division

Kesterson, J.H., DCC
Wouters, W.W., SFCA

| | |
|-------------------------|---------------------------|
| Brehmer, R.L., FA | Lavallee, J.M., SFM3 |
| Brensinger, S.A., DC3 | Lott, C.M., DC3 |
| Biscoe, A.K. III, FA | Marette, L.G., FA |
| Burch, B.A., FN | McCain, D.F., FA |
| Caputo, P.T., FA | Miller, D.R., SFP3 |
| Chilson, H.F., FA | Prince, G.E., SFM2 |
| Cook, L.E., SF1 | Ray, E. (N), SFP2 |
| Flanders, G.N., SF1 | Skeens, C.R., DC1 |
| Flory, M.E., SFM2 | Stewart, S. (N), DC1 |
| Friend, C (N) Jr., DC1 | Tomlinson, J.K., FA |
| Garrett, L.L., FA | Vandenberg, R. (N), SFMFN |
| Hennen, T.W., SFM2 | Walker, C.M., DC2 |
| Kessler, F. (N), DC2 | Warner, J. (N), DC3 |
| Krauss, H.G. Jr., SFPFA | |

"M" Division

Greenaway, R.W., MMCA

| | |
|------------------------|------------------------|
| Alterio, A.R., MM2 | McKenna, J.W., ENFA |
| Banach, P.W., FA | Moses, D.B., MMFN |
| Borgman, L.E., FA | Petrillo, J.E., ENFA |
| Cabral, F.P., FA | Schultz, C.W., MM3 |
| Carr, E.R., MMFN | Shumaker, T.W., MM2 |
| Caruso, B.F. Jr., MM3 | Sponburg, D.K., FN |
| Casto, R.O., FA | Townsend, G.E., ENFA |
| Chambers, W.L., MM3 | Tuthill, J.W. III, MM3 |
| Davidson, A.D., MM3 | Wagner, B.J. Jr., MM2 |
| Davis, M.F., MM2 | Walrod, J.J., MMFN |
| Davis, R.J., MMFN | Warner, J. (N), DC3 |
| Flovick, L.K., FN | Warner, R.H., FA |
| Griffiths, B.G., MM1 | Warren, B.E., FA |
| Harman, W.D., MMFN | Woody, G.A., MMFN |
| Klinefelter, R.L., MM2 | |

SHIP'S CREW

REPAIR DEPARTMENT

"R1" Division

Baril, L.H., PMCA
Buchanan, M.E., SFC
Conley, D.L., SFCA
Harber, G.F., SFCS
Moody, H. (N) Jr., SFCA
Parks, J.T., SFCA
Slawson, K.E., SFCA
Taylor, J.B., MLCA

| | |
|--------------------------|---------------------------|
| Apgar, L.A., SFM2 | Johnson, R.E., BM1 |
| Arnett, L.G., FA | Ledbetter, G.L., SFP3 |
| Bartz, L.E., SFMFN | Mays, J.E., SFM3 |
| Bohling, M.G., SF1 | Marcotte, A.H., SFPFA |
| Brent, B.R., SFP3 | Massie, E.M., SFP3 |
| Bright, M.G., ML3 | McCloud, O.A. Jr., FA |
| Burris, E.R., SFM2 | Morgan, J.T., SFP2 |
| Burton, R.F.E., SFPFN | Nelson, P.E., BM3 |
| Callahan, R.M., SFMFN | Parker, K.M., SFM2 |
| Callachan, W.J., SFMFN | Prewitt, C.W., SFM3 |
| Cook, M.D., FA | Prochaska, R.J. Jr., FA |
| Correll, H.G., SFM3 | Proebstel, G.R., SFM2 |
| Crown, A.E., SFPFA | Rapata, J.E., DC3 |
| Daniels, G.W., FA | Reynolds, C.V., DC1 |
| Darcy, N.P., SFM3 | Rogers, G.G., SFP3 |
| Davis, C. (N), SA | Sewell, J.B., SFM2 |
| DeBlois, E.J., SFMFN | Simmons, L.D., FA |
| Dehner, R.W., FA | Simmons, W. (N), SFM3 |
| Denton, T.K., SFP3 | Stokes, J.W., FN |
| Depozo, D. (N), SFP3 | Stringer, R.E. Jr., SF1 |
| Dusick, J.R. Jr., SFM2 | Swafford, M.K., SFM2 |
| Fox, E.W., FA | Tally, R.E., SF1 |
| Giannone, V. (N), SFM2 | Tapscott, J.F., FA |
| Griffith, T.C., SF1 | Tarpley, R.D., SFM2 |
| Haddan, G.W., SFM2 | Taylor, W.E., DC2 |
| Hale, G.A., SFM3 | Thompson, R.W., MLFN |
| Hammack, R.D., SFPFN | Thorpe, F.M., SF1 |
| Hayden, J.M., SFP3 | Todd, F.J., DC2 |
| Hetrick, J.D., FN | Truelove, R.C., SF1 |
| Hollingshead, D.R., MLFN | Vandenberg, R. (N), SFMFN |
| Horning, T.C., SF1 | Weaver, J.E., FA |
| Jackson, W.W., PMFN | Zirkle, A.L., SF1 |
| Johns, L.G., SFM3 | |

SHIP'S CREW

REPAIR DEPARTMENT

"R2" Division

Delong, J.L., MMC
Hanson, G.H., ENC
Harden, W.E., OMC
Hayes, C.C., MRC
Leskiewicz, P.E., MRCA
Mathis, L.T., OMC
Wood, R.C., MMC

| | |
|-------------------------|---------------------------|
| Brune, J.F., MRFN | Lasher, M.A., OM3 |
| Bryant, C.K., MR2 | Leineweber, J.D., OM1 |
| Bushee, B.W., MRFA | Lemoine, P.N., EN1 |
| Canning, A.J. Jr., OMSN | Meisburger, W.J., EN2 |
| Chase, A.A., MM2 | Meyer, E.C., FA |
| Ciko, A.J., FA | Monday, J.R. Jr., FA |
| Conte, E.R. Jr., MRFN | Morris, G.D., MRFN |
| Coomer, C. (N), MM1 | Murray, J.H., MR2 |
| Copeland, C.E., MRFN | Nelson, A.L. Jr., MM1 |
| Corcoran, D.J., MM3 | Nuttle, D.A., MRFA |
| Cornell, D.W., EN3 | Owle, J.M., FA |
| Cox, C.L., MM2 | Pollock, R.W., MM2 |
| Culbertson, M.G., MR2 | Preston, D.L., MRFN |
| Cummings, W.F., MR1 | Provencher, G.A., MM1 |
| Denham, B.J., EN2 | Rausch, E.L., MR2 |
| Dolney, M.J., EN2 | Rhodes, J.L., EN2 |
| Ellis, R.L., OM3 | Rothenberger, I.L., EN1 |
| Emery, M. (N) Jr., EN2 | Schlager, B.J., EN2 |
| Evard, R.A., FA | Spike, K.R., MRFN |
| Fletcher, W.M., MR2 | Stiner, J.M. Jr., FA |
| Firmage, J.L., IM2 | Thomas, D.L., SN |
| Flynn, W.J., MR1 | Thomas, G.M., MR2 |
| Galle, C.L., MRFN | Thompson, W.L., IM1 |
| Geist, G.E., EN2 | Thouvenin, E.A. Jr., IMSN |
| Heckman, R.E., MM1 | Veches, G.M., MRFA |
| Holt, H.H., MR1 | Viga, V.J., FA |
| Huff, M.S., EN2 | Walk, J.E., FA |
| Ivey, J.D., MM2 | Walton, L.S., EN1 |
| Johnson, E.L., FN | Wilson, J.L., OM2 |
| Johnson, E.N., MR1 | Wiscott, Q.F., MM2 |
| Johnston, P.E., EN2 | Wolber, W.E., MRFN |
| Kapusta, L., MR1 | Wolfe, L.H., FA |
| Kisolek, T.P., MM3 | Wright, J.S., FA |
| Krider, D.J., MR3 | Yoder, E.K. Jr., OMSA |

SHIP'S CREW

REPAIR DEPARTMENT

"R3" Division

Boss, A.M., EMC
Tucker, W.B. Jr., EMCM
Whitney, H.G., ICCS
Wollford, C.E., ICC

| | |
|--------------------------|-------------------------|
| Arietti, R.M., EM2 | Mundis, L.E., FA |
| Barthe, R.C., IC2 | Nickerson, J.N., FA |
| Beck, H.R., EM1 | Odom, J.R., EM2 |
| Beebe, V.J. III, ICFA | Parker, W.C., FA |
| Bennett, J.W., FA | Patten, K.O., ICFN |
| Buchanan, J.L., IC1 | Polston, W.E., IC2 |
| Domagauer, D.B., IC2 | Purcell, R.J. Jr., EMFN |
| Dresslaer, H.C. Jr., EM3 | Reiman, L.W., EM1 |
| Estell, M.L., EM2 | Rider, S.R., IC2 |
| Flowers, C.E. Jr., EN2 | Rossi, E.J., FA |
| Flowers, J.L., EM2 | Sinclair, R.G., EM1 |
| Inman, N.L., EMFN | Slaymaker, R.F., EM2 |
| Keough, T.S., EM3 | Stanley, K.E., IC1 |
| Lindberg, T.P. Jr., IC3 | Vorass, P.D., EMFA |
| Louge, C.M., FA | Ware, R.A., MR1 |
| Lówery, J.L., ICFA | |

"R4" Division

Bell, J.R., ETCS
Collins, W.J., STCA

| | |
|------------------------|------------------------|
| Blood, W.D., EN1 | Konstant, R. (N), ETR3 |
| Brock, D.W., SOS2 | McKee, P.R., ETRSN |
| Bulson, I.J., ETR3 | McUmber, S.A., SOS3 |
| Clutter, D.E., ET1 | Moore, J.K., ETN1 |
| Davis, J.L., ETRSN | Owens, R.A., ET1 |
| Dilg, H.R., ETR3 | Ring, D.A., STSSN |
| Gillman, J.W., ETN2 | Singbush, R.S., ETN3 |
| Haidaichuk, P.G., SOSA | Stieber, G (N), EN2 |
| Holland, M.L., ETR3 | Wise, R.L., ETN3 |

"R5" Division

| | |
|---------------------------|---------------------------|
| Daniels, S.C., FA | Payne, R.D., IC2 |
| Davis, S.B., EN2 | Presnell, E. (N), SFM3 |
| Dellapenna, J.T., FA | Reed, C.T. Jr., FA |
| Fredericks, H.M. Jr., MR2 | Spangler, K.J., FA |
| Gondek, S.J., EN2 | Thompson, L.J., SFM2 |
| Lee, E. (N), MM1 | Valicke, D.F., EN1 |
| Long, R.T., SFM2 | Vankregten, G.J. III, EN1 |

SHIP'S CREW

REPAIR DEPARTMENT

"RC" Division

Brown, J.R., EMC
Godek, E.E., ENC
Samuels, R.L., EMCA

| | |
|--------------------|------------------------|
| Alaimo, J.J., EM1 | Huck, C.E., MRFN |
| Banks, W.W., EM2 | Liparula, F.J. Jr., FA |
| Cain, J.R., EM1 | McDevitt, G.W. Jr., FA |
| Gallotti, J.L., FA | Roy, B.W., FA |

"RS" Division

Chavez, A.A., YNC
Clements, W.L., MMCM
Odberg, C.L., ENC
Travis, R.A., EMCA

| | |
|-------------------------|---------------------------|
| Babson, J.L., MR1 | Goodwin, E.A., PH1 |
| Benton, G.C., FA | Nevel, K.M., DM1 |
| Fanning, W.J. Jr., ETR3 | Shane, I.M., L13 |
| Ford, R.S., SN | Vanvliet, N. (N) Jr., EM2 |
| Foreman, B.G., LI1 | Zielinski, P.P. Jr., YN3 |

"RT" Division

DeMoss, F.F., SFC
Jones, J.C., IMC
Payne, A R., SFCA
Rendell, E.V., ETC

| | |
|----------------------------|----------------------|
| Allen, L.R., OM1 | McCarthy, J.E., ET1 |
| Ash, W.L., SF1 | McClearn, D.B., ETR3 |
| Bannister, G.Q. Jr., ET1 | Miller, P.W., SFP2 |
| Britton, R.L., ETR3 | Murray, A.F., SFP2 |
| Byrd, L.L., ETRSN | Myers, T.J., OMSN |
| Campbell, G.E., SF1 | Peterson, G.R., ETN3 |
| Clark, C.A., IM2 | Ramage, D.G., IM3 |
| Demartini, R.G. Jr., ETRSN | Swanberg, C.E., ETR3 |
| Hennecy, G.E., ETR3 | Treadway, S.E., SF1 |
| Hermans, R. (N), SF1 | Wick, P.R., ET1 |
| Matzke, J.H.C., IMSA | |

SHIP'S CREW

SUPPLY DEPARTMENT

"S1" Division

Keebaugh, SKC
Thomas, C.W., SKCA

| | |
|-----------------------|-----------------------|
| Alleman, G.J., SK1 | Krumvieda, W.E., SKSA |
| Bequette, S.J., SK3 | LaCross, R.S., SK3 |
| Briggs, E.R., SK1 | Leeman, R.H., SKSN |
| Brown, R.B., SK2 | McDaniel, C.E., SK3 |
| Brown, W.M., SK2 | Miller, B.E., SK3 |
| Cecil, H.L., SK1 | Miller, W.L., SK2 |
| Colley, W.H., SA | Murphy, J.P., SK2 |
| Coyle, J.A., SK3 | Norton, A.J., AS |
| Davidson, J.H., SK2 | Oliveira, M.D., SK3 |
| Dyer, C.B., SK2 | Rastall, J.A., SK2 |
| Evenson, V.H., SKSN | Rogalsky, L.H., SK1 |
| Filson, L.D., SKSA | Runk, R.L. II, SN |
| Gaston, R.D., SK3 | Sanders, J.W., SA |
| Goecks, L.F., SK3 | Sparrow, E.J., SKSA |
| Gude, G.M., SKSN | Stanton, W.L., SN |
| Herlt, R.W., SKSA | Steckman, J.K., SK2 |
| Hinton, W.E., SA | Vanfossan, G.F., SK1 |
| Jacobs, H.H. III, SK3 | Watson, D.M., SK2 |
| Kanouff, R.C., SKSA | Wilson, R.O., SA |
| Kellums, W.D. SK1 | Yagac, R.J., SK2 |
| Knight, J.E., SK2 | |

"S2" Division

Moody, W.R., CSCA
Winans, A.J., CSCA

| | |
|-----------------------|---------------------------|
| Augusta, M.J., CS2 | Ennis, J.L., CS3 |
| Bathurst, K.M., FA | Gilmer, C.W., CS3 |
| Bednarek, R.Z., CS1 | Hall, C.H., ETR3 |
| Blackwall, J.T., CS3 | Hamm, L. (N), CS2 |
| Buhrmaster, C.E., CS2 | Howard, P.J., CS2 |
| Coleman, H.R., SA | Luney, T.L., CS3 |
| Demeritt, P.O., CS1 | Massey, E.V., CS2 |
| Devisscher, W.R., CS2 | Pullen, J.R., CS1 |
| Dirnberg, M.J., CS3 | Tenchara, J. (N) Jr., CS2 |
| Dowing, E. (N), CS3 | Williamson, J.B., CS3 |

SHIP'S CREW

SUPPLY DEPARTMENT

"S3" Division

Givens, A.F., SHC

String, R.C. Jr., SHCM

| | |
|----------------------|-----------------------|
| Baker, C. (N), FA | Renfroe, C.M., SA |
| Blair, J.J., SHSN | Rose, N.E., SN |
| Burrage, W.A., SH3 | Rose, W.R., SH3 |
| Camerone, R.P., SN | Ryan, J.W., SH1 |
| Closs, J.T., SHS2 | Smith, E (N), SH2 |
| Grace, E. (N), SH2 | Staton, J.R. Jr., SH3 |
| Hodgeson, R.B., SH3 | Swift, B.R., SH2 |
| Johnson, J.W., SH3 | Thorner, F.P., SH3 |
| Lewis, C.L., SA | Warrick, R.J.C., SH3 |
| McIntyre, D.P., SH3 | Williamson, R.L., SH1 |
| Perry, D.M. Jr., SH2 | Wright, D.H., SH3 |

"S4" Division

Ames, W.H. III, DKC

| | |
|--------------------|--------------------|
| Carter, L.F., DKSN | Root, R.L., DK2 |
| Howe, J.A., DK3 | Soltes, C.N., SK2 |
| Polito, J.A., SK3 | Starkey, B.H., DK2 |
| Ryder, G.B., DK1 | Wilson, R.E., DK3 |

"S5" Division

Parks, C.W., SKCA

Tyner, K.M. Jr., SKCS

White, J.P., SKCA

| | |
|---------------------|----------------------|
| Brown, W.N., SK2 | Salvador, B.R., SK1 |
| Castro, R.P., SK2 | Sparrow, E.J., SKSN |
| Conway, J.A., SK2 | Swisher, R.M., SK3 |
| Herlt, R.W., SKSN | Thompson, J.M., SK2 |
| Hill, A.W., SK3 | Thomas, M. (N), SN |
| Johnson, E.C., SK3 | Vanfossan, G.F., SK1 |
| Johnson, R.E., SK1 | Wiseheart, E.W., SK1 |
| O'Neill, L.P., SK1 | Wood, E.C., SK3 |
| Perrin, J. (N), SK1 | |

"S6" Division

Swilling, J.A., SDCM

| | |
|----------------------|----------------------|
| Cabalag, M.B., TN | McClain, M. (N), TN |
| Carey, R. (N), SD3 | Pratt, D. (N), SD1 |
| Cuenca, P.C., SD3 | Prestosa, A.E., TA |
| Faison, F.L., SD3 | Rollerson, R.F., SD3 |
| Hilos, D.T., TN | Santiago, R.E., TN |
| Lee, R.L., SD2 | Torio, D.O., TA |
| Manalo, P.E. Jr., TN | Tumang, A.C., TA |
| Martinez, B.A., TN | |

SHIP'S CREW

WEAPONS REPAIR

"W1" Division

Engle, J.R., MTCA
Jones, K.M., MTC
Keener, F.R., MTC
Smith, D.G., TMC

| | |
|-----------------------|------------------------|
| Anderson, R.R., MTSN | Kyseth, J.L., MTSN |
| Bannon, J.R., MT2 | Lifrage, E.G., MT3 |
| Ballard, S.H., SN | Lyda, C.V., TM1 |
| Beisler, J.M., MT3 | Morford, F.C., TM2 |
| Bittle, W.G., MT3 | Nunneley, D.H., MT2 |
| Broughton, W.F., MTSN | Pritchett, J.H., MT2 |
| Bryant, H.L., TM1 | Poe, J.L., MT2 |
| Brumage, F.E., MT2 | Ramsey, E.E., TM2 |
| Chandler, W.F., MT3 | Renner, J.M., MT3 |
| Cole, D.L., TMSN | Schneider, U. (N), MT2 |
| Farley, W.A., MT1 | Schreiber, L.E., MT1 |
| Garner, H.R., MT3 | Simon, R.W. Jr., MT1 |
| Gilbert, G.L., MT2 | Stockdale, E.D., MT3 |
| Hallowell, C.C., TM2 | Stokke, M.W., MT3 |
| Halquist, V.A., MT2 | Tode, R.E., MT3 |
| Hawkins, R.B., TM1 | Truitt, R.K., MT3 |
| Jones, H.E., MTSN | Waddell, D.R., MT3 |
| Karl, R.G., MTSN | Wilgar, E.C., MT3 |
| Kulma, J.W., MTSN | Witkowski, R.A. |

"W2" Division

Merkle, J.T., FTC
Quinn, M.V., FTCS
Stallworth, W.E., FTCA

| | |
|-----------------------|-------------------------|
| Alston, J.T., FTM2 | Nance, K.R., MT2 |
| Arnsberger, J.R., MT3 | Offenbecker, M.A., MT2 |
| Crow, M.E., FTM3 | O'Leary, G.D. Jr., FTM1 |
| Hilton, W.R., FTM1 | Werdahl, J.L., FTM2 |
| Lay, K.R., FTGSN | Westby, T.J., FTM3 |
| Manley, K.R., MT1 | Wilke, E.E., FTM1 |
| Minich, J.W., FTM2 | |

"W3" Division

Foster, C.R., GMTC

| | |
|--------------------|-----------------------|
| Becker, W.E., GMT2 | Morrell, W.W., GMT1 |
| Decker, B.D., GMT2 | Neill, R.D., GMT2 |
| Gladys, D.H., TMSN | Ruark, W.W. Jr., GMT2 |
| Harris, R.L., YN2 | Russell, R.H., TM2 |
| Monson, R.E., TM2 | |

SHIP'S CREW

WEAPONS DEPARTMENT

"W4" Division

Davis, J.R. III, ETCA
Drew, O.C., ETCS
Fogg, R.E., ETCA
Konkle, G.W., ETCA

| | |
|--------------------------|--------------------------|
| Bogstad, J.W., ETN3 | Semmens, R.J., ET1 |
| Bowen, J.C., ET1 | Soltau, C.A., ETN3 |
| Davison, J.A., ETR2 | Stroup, C. (N), ETR2 |
| Forbes, R.D., ETR3 | Taylor, J.M., ETR3 |
| Gallaher, J.C. Jr., ETN2 | Thomason, L.C., ET1 |
| Hadman, J.A.B., ETR3 | Thornton, H.A., ET1 |
| Kidwell, R.D., ETN2 | Traynham, D.D., ETR3 |
| Lilly, S.R., ETNSA | Warren, G.E., OM3 |
| Linthicum, A.L., ETN2 | White, A.F., ET1 |
| Lund, H.H. Jr., ETR3 | Wolff, R.C. Jr., ETR2 |
| Mercer, P.B., ETN3 | Zukowski, S.J. Jr., ETR2 |
| Monz, R.H., ET1 | |

"W5" Division

Bean, E.C., TMCA
Lowman, F.W., TMCA
Mangum, J.C., TMC
New, L.C., TMCS

| | |
|-------------------------|----------------------------|
| Able, W.D. Jr., TM2 | Kimbal, L.G., TMSA |
| Aker, R.C. Jr., TMSN | Konzer, J.A., TM3 |
| Akers, E. (N), TM2 | Larrabee, O.W., TM1 |
| Anderson, A.A., TM1 | Lasak, W.G., TM2 |
| Baldwin, J.T. Jr., TMSN | Lebeauf, T.J., TMSA |
| Barnes, M.T., TM2 | Lindstrom, T.K., TM3 |
| Buhmann, D.F., TMSN | Lovell, "R" "C", TM1 |
| Cabral, A.J., SA | Lovvorn, J.L., TM2 |
| Clark, G.P., TM3 | Rodgers, P.W., TM2 |
| Conover, J.M., TMSN | Schneble, T.J., TMSN |
| Dewitt, C.L., TMSA | Scovotto, L.E., TM3 |
| Dixon, R.O., TMSA | Taylor, E.C. Jr., TMSN |
| Doolittle, R.H., TMSA | Thurmond, H.J., TM2 |
| Ezzell, D.S., TM1 | Vantress, S.C., TM3 |
| Giese, R.H., TM1 | Warden, R.L., TM2 |
| Hewitt, E.J., TM2 | White, H.V., TM2 |
| Hiles, W.L., TM2 | Winegardner, C.E. III, TM3 |
| Hull, W.J., TM2 | Workman, W.R., TM2 |
| Iloff, J.H., TM3 | Young, G.M., TMSN |
| Jones, W.D., TMSN | Zeger, R.E., TMSA |
| Kaiser, G.F., TMSA | |

SHIP'S CREW

OPERATIONS — NAVIGATION DEPARTMENT

"N" Division

Daniels, W.G., GMCA

| | |
|--------------------------|------------------------|
| Barnes, A.L., SM1 | Slamka, K.A., SM3 |
| Conwell, W.R., QM3 | Tauchen, M.R., QM1 |
| Dobbins, J. (N) Jr., QM2 | Traylor, T (N) Jr., FN |
| Poole, J.P., SN | |

"O" Division

Kostbade, C.W., RMC

Martin, L.L., RMC

| | |
|-------------------------|--------------------------|
| Arron, R.M., ETRSN | Larsen, J.P., RMSA |
| Baker, R.E., RM2 | Lowrance, D.G., RM1 |
| Blaskiewicz, S.M., RMSN | Maupin, G.A., RM2 |
| Bradish, J. (N), RM2 | McNeal, C.J., RM1 |
| Brown, M.C., RMSN | Miller, E.D., RM3 |
| Buchanan, F.W., RM2 | Minder, W.E., SN |
| Burry, G.J. Jr., RMSN | Paschall, C.B., SA |
| Catone, J.S., RM1 | Powell, J.M., SN |
| Coyle, J.A., SA | Rose, C. (N), RM2 |
| Davis, L.A., ET1 | Rudeck, J.R., RMSA |
| Ermer, A.L., RMSN | Sherman, J.N.E. Jr., RM2 |
| Eubanks, D.E., ET1 | Shirley, C.V., RM3 |
| Flippo, R.B., RM1 | Siary, T.S., RMSA |
| Gallagher, C.M., RMSN | Smith, C.D. Jr., SA |
| Hancock, L.E., RM1 | Spohn, R.F., G1 |
| Hatfield, B.F., RM1 | Torres, J.V. Jr., RMSA |
| Hayne, C.D., RM1 | Wilhelm, J. L., RM2 |
| Jesse, T.J., RMSN | Yeager, G.A., SN |

MEDICAL DEPARTMENT

Logston, G.M. Jr., HMCA

| | |
|------------------------|-----------------------|
| Autry, D.K., HM1 | Miller, S. (N), HM2 |
| Bernard, W.E., HM1 | Newton, D.L., HN |
| Beyer, J.F., HM2 | Powers, C.A. Jr., HM1 |
| Brazitis, S.P., HN | Thomas, R.W., HM3 |
| Edwards, R.D., HM2 | Whitzel, H.H., HM2 |
| Greenough, J.E., HN | Wilson, E.R., HM1 |
| Lockridge, J. (N), HM1 | |

DENTAL DEPARTMENT

Meyers, E.D., DTCA

| | |
|--------------------|---------------------|
| Brothers, F.C., DN | Hill, K.E., DT3 |
| Comek, D.A., DN | McDonald, D.H., DT2 |

SHIP'S CREW

"X" DIVISION

Craven, J.R., PNCS

| | |
|-----------------------|------------------------|
| Barnhart, R.B., YN1 | Leiss, I (N), YN2 |
| Bridges, R.E., PN3 | O'Donnell, R.G., SN |
| Corrigan, M.J., SA | Pennington, K.D., YN1 |
| Garcia, R."A", PN1 | Pleasants, W.R., SA |
| Guyton, G.W. Jr., YN1 | Porterfield, R.W., PN3 |
| Hack, M.J., SA | Robbins, T. (N), PN2 |
| Harris, T.L., SA | Robles, T. (N), YN2 |
| Hurst, D.L., FA | Smith, D.E., PC3 |
| Jarrard, T.R., PC1 | Stauffer, S.M., PN2 |
| Jenkins, T.R., YN3 | Thornton, J.W., SN |
| Kee, F.H., SN | |

"XD" DIVISION

McCool, J.A., MACS

| | |
|--------------------------|-----------------------|
| Anderson, D.E., MASN | Mcoy, W.H., MA3 |
| Barbieri, M.P. Jr., MASN | Oaks, G.S., MASN |
| Boles, C.A., MA3 | Peck, G.E., MA1 |
| Chiappone, D.A., MSN | Reese, W.P., MA |
| Dupuis, J.C., MASA | Smith, B.E. Jr., MASN |
| Ednie, F.G., MASN | Villanova, J.E., MA3 |

MARINE DETACHMENT

Clark, F.G., SSGT

| | |
|---------------------|----------------------|
| Brown, M.B., PFC | Kaufman, G.N., LCPL |
| Eagle, B.R., SGT | Kauffman, J.C., LCPL |
| Garrison, G.J., PFC | Meuller, T.M., LCPL |
| Herring, D.E., PFC | Winkler, G.J., PFC |
| Jones, M.C., PFC | Young, J.L., LCPL |

Names of additional Marine Corps personnel not available.

NOTES

THE SHIP'S INSIGNE

The ship's insigne has been selected to symbolize SIMON LAKE'S mission of POLARIS support. SIMON LAKE, the newest and most modern submarine tender, is in the foreground. The missile in the background, superimposed on a field of blue, signifies the POLARIS Weapons System, the nation's invulnerable deterrent. The dolphins depict the Submarine Service, and the Nuclear POLARIS Submarines which SIMON LAKE will support.

283

